



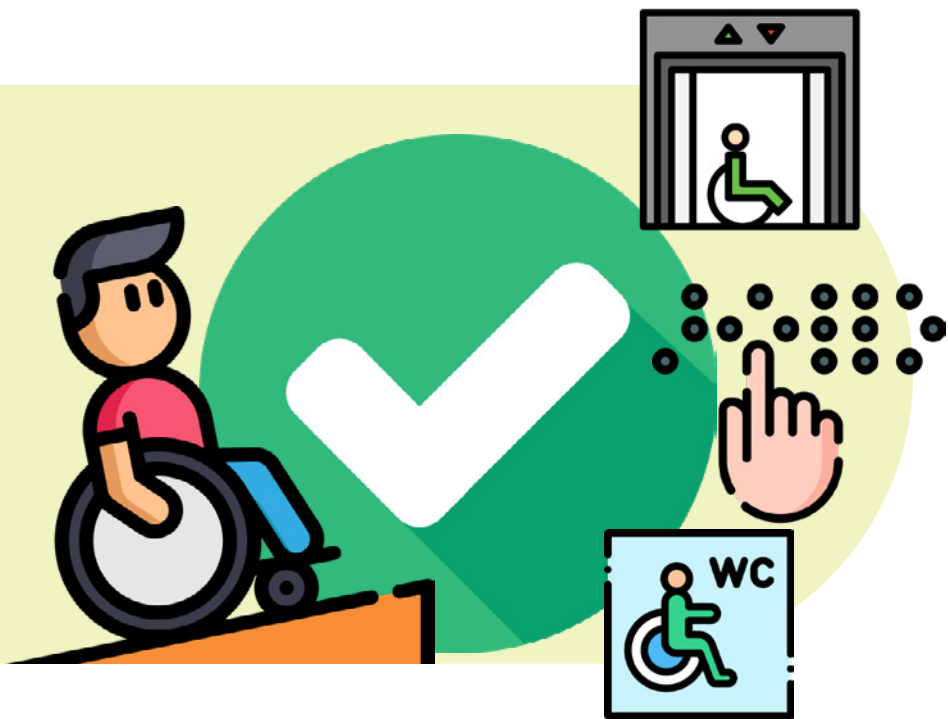
Physical Accessibility Facility Evaluation

Ottawa’s Equity, Diversity, and Inclusion Resource Hub for Sport



Understanding Why

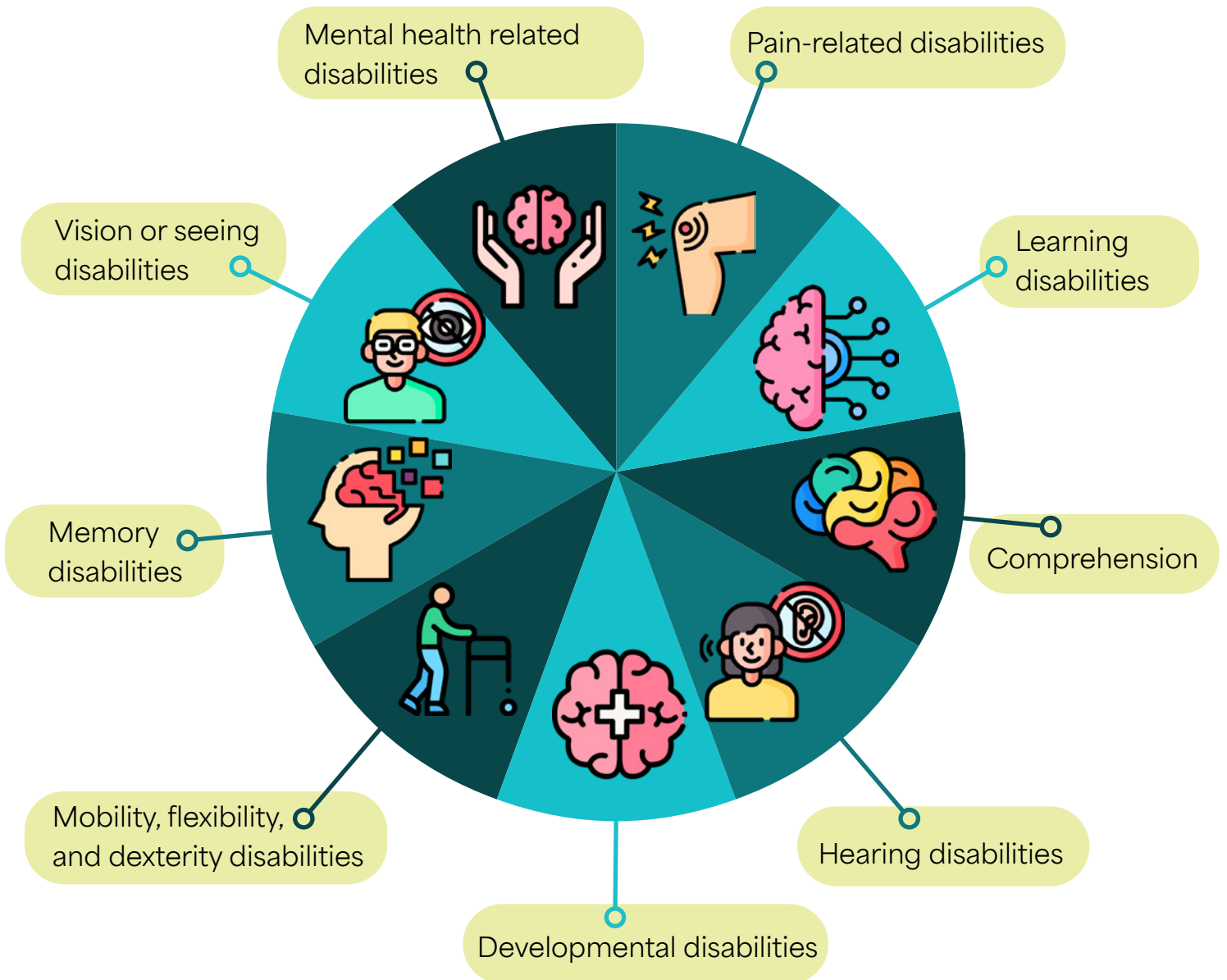
This tool can be used when facilities and organizations are evaluating the accessibility of their space. A general understanding of facility accessibility will allow details to be shared with program participants, staff and volunteers. This tool can also be used to evaluate the accessibility of a potential facility and its fit for an organization’s members.





This physical accessibility evaluation is meant to be a starting point for understanding facility accessibility. We highly recommend engaging a trained accessibility consultant, preferably with lived experience of disability to provide a more fulsome review of the facility. Also, be aware that some amenities may be Accessibility for Ontarians with Disabilities Act (AODA) compliant, but that doesn't mean that they won't still have barriers to accessibility.

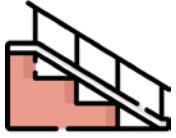
Consider each question from various disability perspectives:





Outside Approach, Car Park & Entrance

Indicate Y or N as appropriate and add notes if necessary

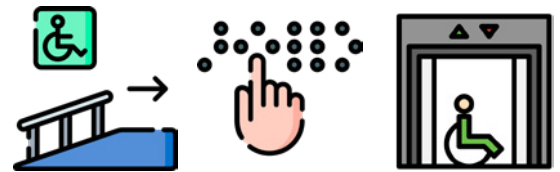


Area	Yes	No	Comments
Access to public Transit			
Drop off location for Para Transpo (proximity from building)			
Well lit for evening drop off and pick up			
Access to Parking (Indoor)			
Access to Parking (Outside)			
Building kept free of snow, etc.			
Curb cut outs available and clear			
Ramp to front Entrance			
Hand rails one side			
Hand rails both sides of ramp			
Grade of ramp meets standards (Every inch or rise = 1 foot of run)			
Portable ramp available for entrance			
Buttons on Front entrance (with delayed close feature)			



Width of front door wide enough			
Keypad entrance accessible for standing and/or sitting and/or short of stature with visual and auditory features			
Wayfinding on the outside of the building			

Inside the Building - Lateral and Vertical Movement



Area	Yes	No	Comments
Assess exercise/fitness area to have space between equipment. For more details, see here .			
Elevator required in building			
Visual, auditory, and tactile signs in elevator			
Space within work/play/train location to move around (5' turning radius)			
Access to break room if available			
Access to lunch room if available			
Reception desk, counters accessible from standing and seating (adjustable, etc.)			
Desk space			



Adaptive software available (speech to text, etc)			
Hallways, passage ways wide enough for wheelchair user			
Textured surfaces for those with Vision Disabilities			
Tactile signs available			
Seated arrangements/options for wheelchair user			
Seated arrangements for those with Vision Disabilities			
Any steps, type of surface, how many etc.			
Handrails on steps			
Non slip surfaces			
Stairs with Chairlift			
Door handles easily operated or grasp			
Quiet Space available “wellness, mindfulness, prayer, rest” space			
Family Space available			
Wayfinding inside the building (use of coloured lines or arrows to specific locations)			
Volume of music (Can it be adjusted for individuals who are sensitive to loud noise)			
Brightness of lights (an option to dim them in some areas)			



Flow of traffic inside the building, long lines to wait for pool, activities or paying for access.			
Can the facility offer sensory hours (less clients, softer music, dimmer lights, etc)			



Washroom/Change Room Facilities

Area	Yes	No	Comments
Washroom			
Accessible Washroom			
Grab bars in bathroom			
Transfer table in bathroom that is adult size			
Emergency call system			
Emergency call system accessible from floor level			
Sufficient space at entry for wheelchair maneuvering and door opening			
Grab bars in washroom			
Hand washing within reach for someone seated			
Sensory friendly dryer and taps			
Space under sink for wheelchair user			



Automatic lock on bathroom door			
Air Dryer vs Paper Towel (option of both) Sound of air dryer can be too loud			
Post a sign to let families know loud flush or loud dryer			
Option for family change rooms. Change rooms can be overwhelming so having options for families might mean they come back.			

Emergency and Safety Concerns



Area	Yes	No	Comments
Sound and visual systems in building for emergency			
Emergency Exits accessible			
Wayfinding on where the Emergency Exit leads.			
Access to safety stations depending on the work/training requirements			
Emergency lighting on Fire alarm for those hard of hearing/Deaf (Hearing Disabilities)			
Emergency sounds for those hard of hearing/Deaf (Hearing Disabilities)			